

## TYPES OF GROUPS

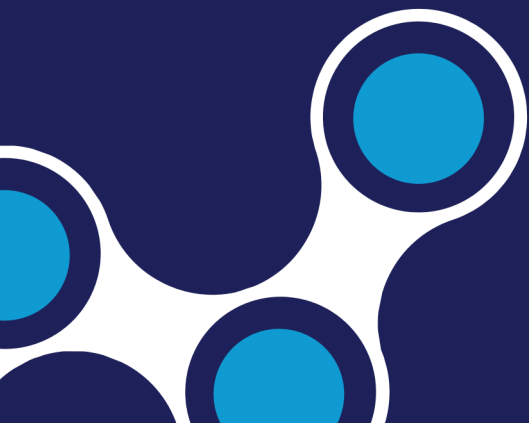
---

At WALK Church, we offer a variety of Charge Groups, including home groups, study/class groups, and affinity groups. While each group has its own focus, they all share the same goal: helping people find community and take their next steps in their relationship with Jesus.

### CONNECT GROUP

### STUDY GROUP

### AFFINITY GROUP



# TYPES OF GROUPS

## CONNECT GROUP

Connect Groups meet in a variety of locations and focus on fostering meaningful relationships and connections. Discussions are often sermon-based or devotional, creating a space for thoughtful conversation, spiritual growth, and community building.

## PREPARING

- Make sure the environment is clean and ready.
- If in a home, turn off TV and place worship music on in the background
- If in a home and you have kids coming: prepare the kids area to welcome the kids. This can include a movie being played or some sort of activity.
- If having a group meal: Communicate or have your host communicate what part of the meal is being provided and ask the members of the group to bring something.
- If in a home, provide coffee or water. Especially, if you are not having a meal. If you are a coffee shop, everyone can purchase their own drinks.
- Be sure to welcome new guest. If in a home, provide any information such as where the bathroom is, kids space, etc...
- If in a home, hang a welcome sign on the door. If you want shoes off, communicate that.
- Just don't be afraid to communicate what your guest need to know. You can do so in a life-giving way.

## OTHER TIPS

- If the group has a host who is not the facilitator, the host should allow the facilitator to lead the group time, including setting the start and end times. The host should also participate fully in the group.
- Start and end on time. The facilitator should, in a life-giving manner, communicate when the group is concluding and assist the group in preparing to exit the home at the designated time.
- When communicating with new members, provide all necessary information. For example, if a meal is part of the group, make sure to mention it and clarify that bringing something is not required. If the group is "kid-friendly," include this detail in the welcome email. For example: *"Kids are welcome to watch a movie and play quietly in the room upstairs. Please note that we will not be providing a babysitter. As a guideline, children aged 3 to 12 can go upstairs to watch a movie. Children aged 2 and under should remain with you downstairs. Teens aged 13 and older are welcome to join the group."* Celebrate any special occasions as a group: Birthdays, baptisms, next steps!
-

# TYPES OF GROUPS

## STUDY GROUP

Study groups are centered on in-depth Bible or book studies and can be hosted in a variety of environments. While many focus on exploring scripture or specific topics in detail, some are designed to help individuals find freedom and growth in particular areas of their lives. **All materials and group focuses must be approved by the WALK Church groups team before starting.**

## PREPARING

- Ensure that the environment is suitable for this type of group.
- Obtain approval for the study materials you plan to use.
- Communicate any costs associated with the materials to the group members and provide information on how to access them.
- If the group is hosted in a home, please refer to some of the guidelines for a connect group.

## OTHER TIPS

- Create a life-giving atmosphere. If the Bible or book study includes open discussion, guide it positively and steer the conversation away from negativity if it arises. Don't feel
- pressured to have all the answers. If you're unsure about a question, direct them to [walkchurch.com/groups](http://walkchurch.com/groups) to fill out a contact form, or reach out to our WALK Church groups team. You can also refer to our WALK Church statement of beliefs as needed.



# TYPES OF GROUPS

## AFFINITY GROUP

Designed to help individuals build community around a shared interest, these groups can be hosted in various environments. They often center on a specific mission, hobby, or activity, providing a space to connect with others while cultivating meaningful relationships.

### PREPARING

- Ensure that the environment is life-giving.
- If there is a cost involved for the activity, communicate this to the group before the meeting.
- If the group is hosted in a home, please refer to some of the guidelines for a connect group.

### OTHER TIPS

- Because Affinity Groups use different environments, don't worry if the group time isn't very formal. For example, if your group is centered around a mission activity, serve together and, after the project, ask a simple question like, "What did God teach you today about yourself or about Him?" Allow people to share and take a moment to pray for one another. Be creative in how you share scripture to encourage the group.
- Consider sharing a proverb of the day before or after the activity. Remember to pray together and follow up on any next steps.